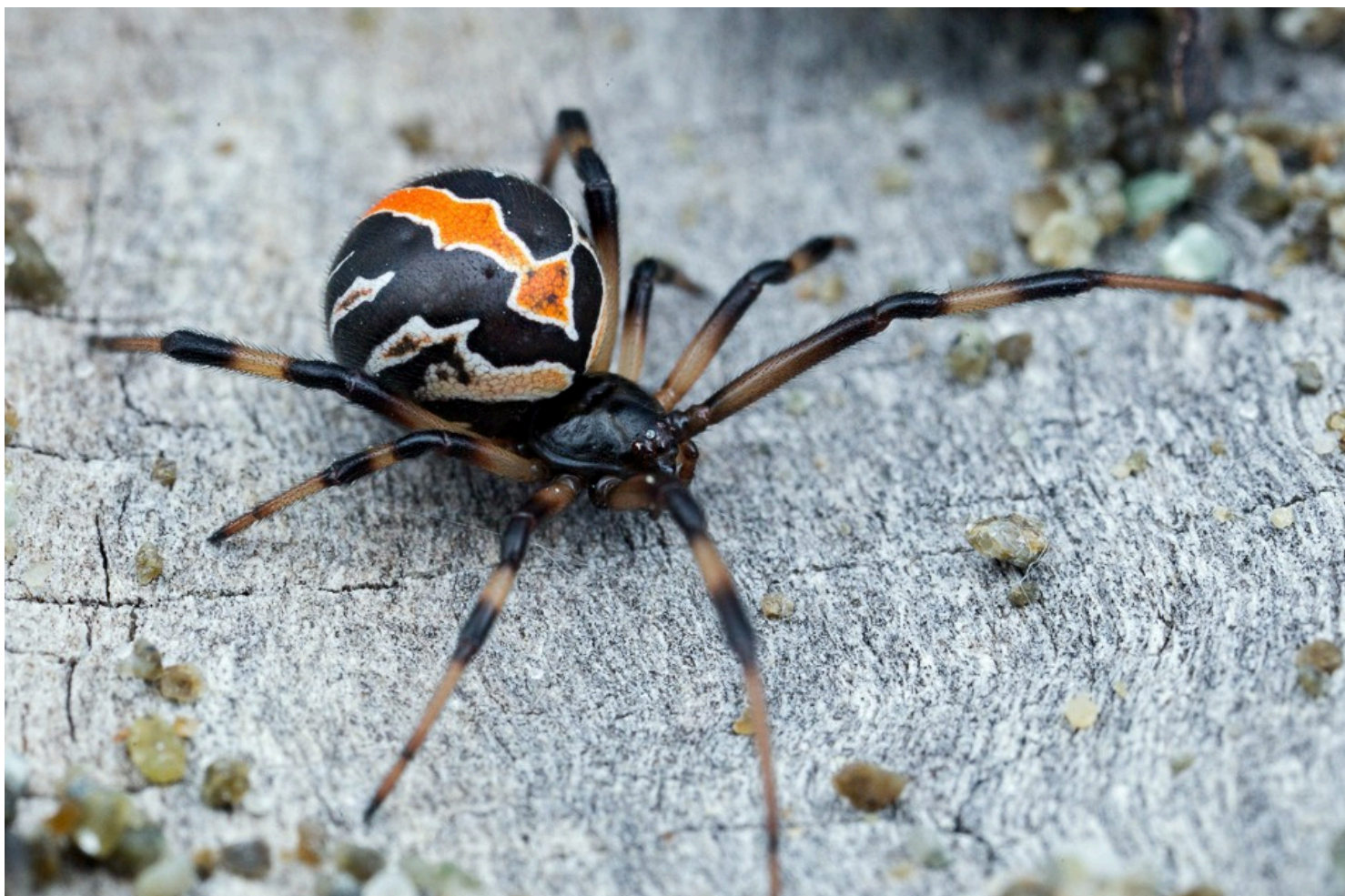


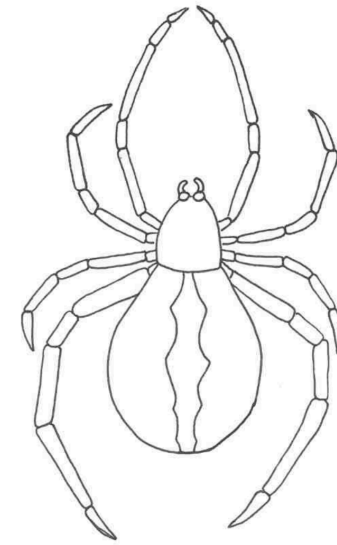
# He Katipō



He uwha katipō  
Ehara nā T.O.I tēnei pikitia

## He Katipō

- E kitea noatia ana te *katipō* i Aotearoa
- Kua tata kore hāhā te *katipō*
- Ki te patua te *katipō* e te tangata ka hāmenetia rānei, ka mauheretia rānei ia
- E ai ki te kōrero, ka kai te wāpi taketake nō Aotearoa i ngā hua o te *katipō*
- He pūngāwerewere taketake te *katipō* nō Aotearoa
- Kia tūpato ki ngā niho o te *katipō*, he paitini
- Ka kitea te *katipō* ki tātahi
- Ko te rango me te pēpepe me ētahi atu ngārara ngā tino kai o te *katipō*
- He iti iho te toa i te uwaha
- He mā me te parauri ngā tae o te toa *katipō*



## E toru ngā wāhanga o te mataora o te Katipō:

1. Hua - ka tākaia katoatia ngā hua e te uwaha ki te hiraka
2. Poko katipō - ka whakamāunutia tōna angawaho e 4 - 10 ngā wā i tēnei wāhanga o tōna oranga kia pai ai tana tipu.
3. Pūngāwerewere *katipō*

## Ngā wāhanga o te katipō:

Paneuma / pokouma - cephalothorax

Puku - abdomen

Repe paitini - poison gland



He uwaha katipō me āna hua  
Ehara nā T.O.I tēnei pikitia



He toa katipō  
Ehara nā T.O.I tēnei pikitia

