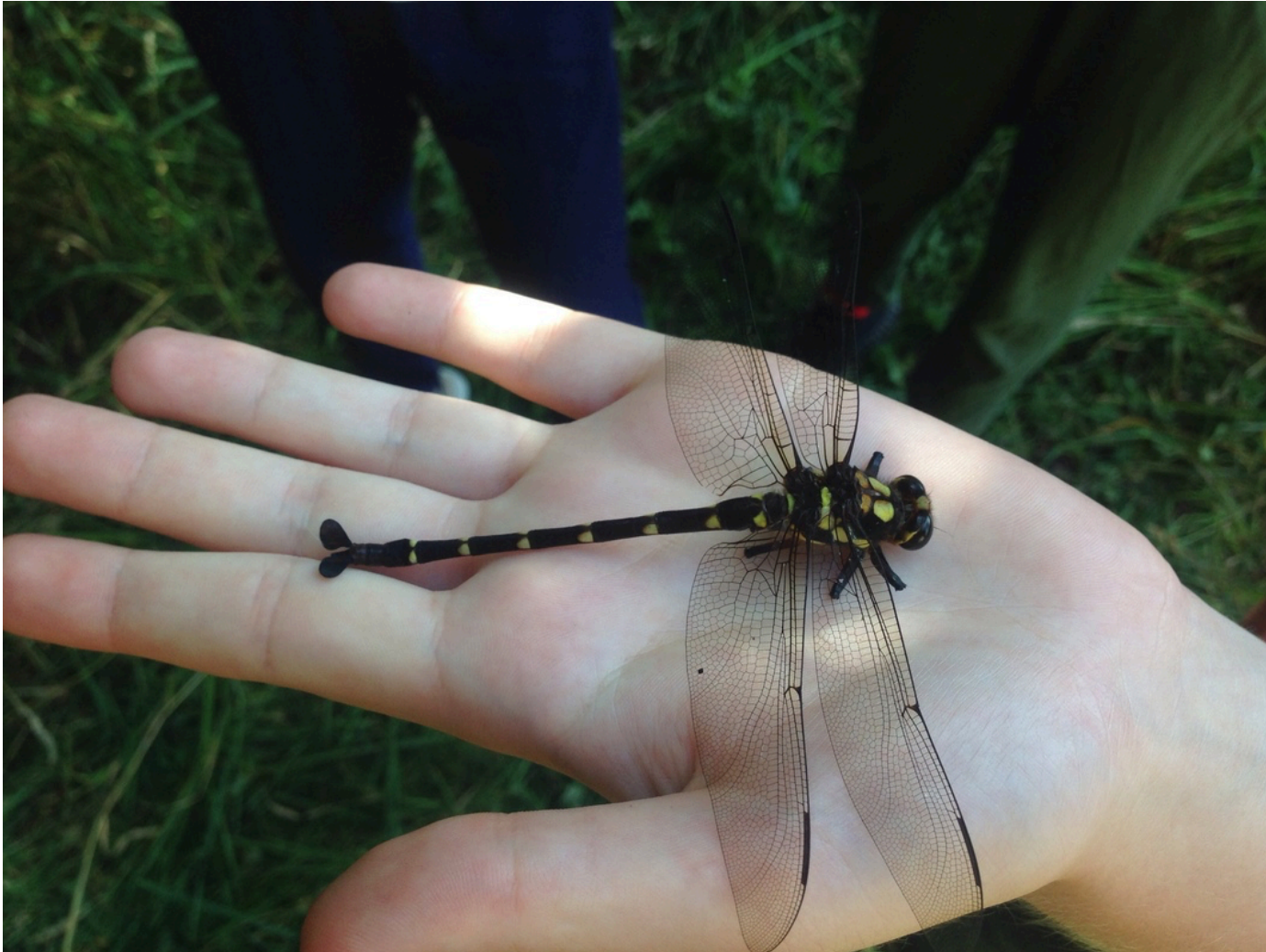
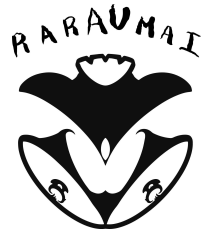


# He Kapokapowai



Ehara nā T.O.I tēnei pikitia

## He Kapokapowai

- E kitea noatia ana tēnei momo *kapokapowai* i Aotearoa.
- He rahi, he pango, he kōwhai tōna hanga.
- Ka eke ki te 80 - 86 mm tana roa.
- Ko te *kapokapowai* te rangatira o te rere. E āhei ana te *kapokapowai* te rere whakaterunga, whakateraro, whakatemua, whakatemuri, whakatemataua, whakatemauī, waihoki, te topaki.
- Ko te pūrerehua, te tātarakihi me te wāpi tana kai
- Ko te pokopoko *kapokapowai* hei kai mā te weka me te ngeru
- Ko te *kapokapowai* hei kai mā te kiore me te kōtare

## E toru ngā wāhanga o te mataora o te Kapokapowai

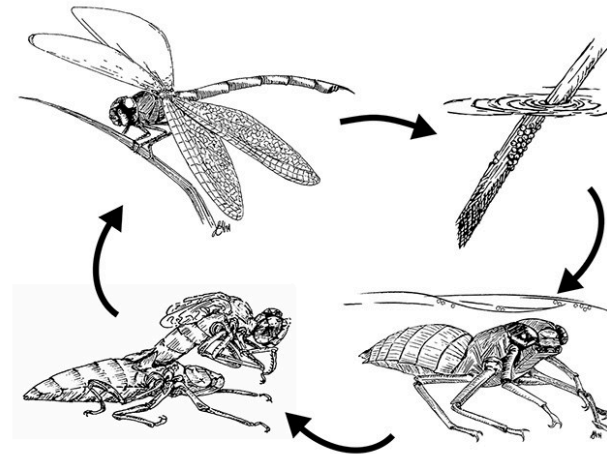
1. Hua
2. Pokopoko - ka 5 - 6 tau te roa o tēnei wāhanga o te mataora o te pokopoko
3. Kapokapowai - ka 3-4 marama e ora ana hei *kapokapowai*

## Ngā wāhanga o te Kapokapowai

- Panepane/upoko - head
- Tauhae - stigma
- Tārāuma - thorax
- Puku - abdomen
- Pūhihi - antennae
- Paihau takamua - forewings
- Paihau takamuri - hindwings
- Waewae - legs
- Kauae - mandibles
- Karu tairongo - ocellus
- Hihi tairongo- cerci



He kapokapowai. Ehara nā T.O.I tēnei pikitia



Te mataora o te kapokapowai.  
Ehara nā T.O.I tēnei pikitia

He pokopoko kapokapowai.  
Ehara nā T.O.I tēnei pikitia

